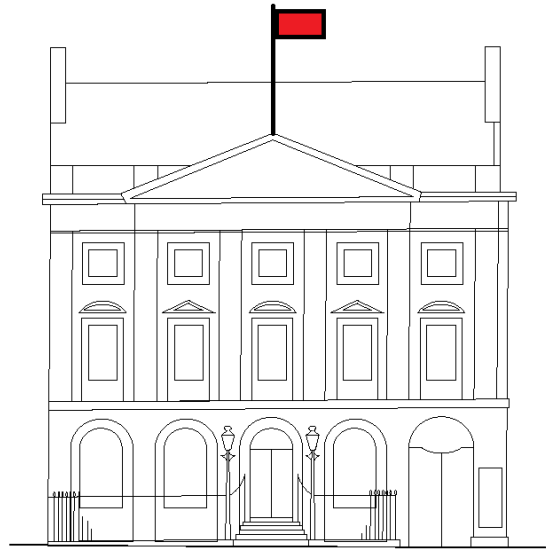




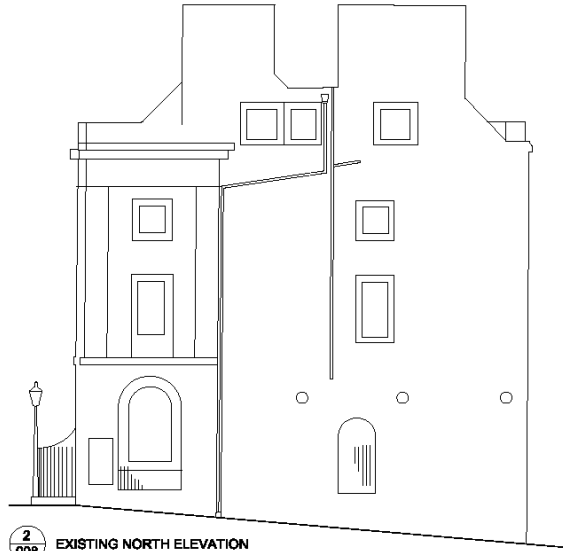
Planning Committee B

24/00447/ADV

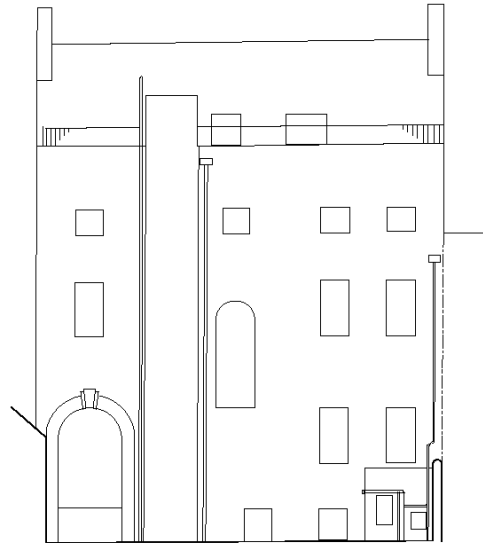
The Mansion House, St Helens Square



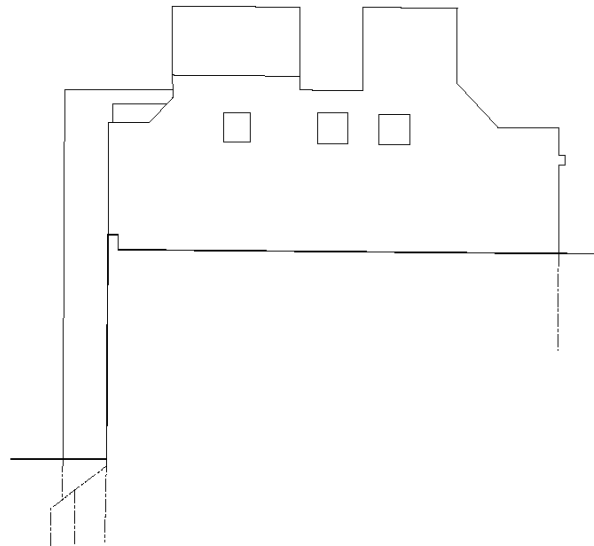
1
008 EXISTING EAST ELEVATION



2
008 EXISTING NORTH ELEVATION

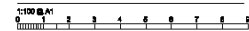


3
008 EXISTING WEST ELEVATION



4
008 EXISTING SOUTH ELEVATION

Note
Elevations lifted from hand-drawn City of York
Development Services drawing R06A/7 dated June
1988
In light of this, the accuracy of these elevations
should not be relied upon.



YORK MANSION HOUSE
ST HELENS SQUARE
YORK
YO1 9QL

Existing Elevations

APPROX.	21.04.15
1:100 @ A1	nm NMR
1:200 @ A3	nm JEM